

Chandler Workspace Supply Arrangement - Krug  
140003-083



# Categories 2 & 3 - WORK SURFACE PRODUCTS & FILING AND STORAGE PRODUCTS

Furniture for Work Spaces: E60PQ-140003-083/D



Artemis



Artemis Laminate



# Category 4 - Phone Booths And Pods

Furniture for Work Spaces: E60PQ-140003-083/D



Zola Privacy



Zola Privacy



# Category 6 - COLLABORATIVE PRODUCTS – Meeting and Training Tables

Furniture for Work Spaces: E60PQ-140003-083/D



NUVO



MILLENNIUM



REVO



CHIT CHAT



ANDO



V2



# Category 6 - COLLABORATIVE PRODUCTS – Banquettes, Modular, Sofas

Furniture for Work Spaces: E60PQ-140003-083/D



ZOLA PRIVACY  
ZOLA LOUNGE  
ZOLA MODULAR  
ZOLA BENCHING





# Category 6 - COLLABORATIVE PRODUCTS - Lounge

Furniture for Work Spaces: E60PQ-140003-083/D



BRIO



LEYTON



FAERON



CARLYLE

# Category 6 - COLLABORATIVE PRODUCTS - Lounge

Furniture for Work Spaces: E60PQ-140003-083/D



Sutton Lounge





# Category 6 - COLLABORATIVE PRODUCTS - Lounge

Furniture for Work Spaces: E60PQ-140003-083/D



Carlyle Lounge



Brio Lounge



## Category 6 - COLLABORATIVE PRODUCTS - Lounge



Faeron Lounge





## Category 6 - COLLABORATIVE PRODUCTS – Kitchenette Chairs

Furniture for Work Spaces: 140003-037/D 3 83



CORFU



CAPRI



# Category 6 - COLLABORATIVE PRODUCTS - Kitchenette Chairs

Furniture for Work Spaces: E60PQ-140003-083



Karma Counter Height



Corfu Barstool



Manolo Barstool



# Category 6 - COLLABORATIVE PRODUCTS – Occasional Tables

Furniture for Work Spaces: E60PQ-140003-083/D



Sutton



Leyton



Zola



Karma



Faeron



Millennium





# Category 6 – COLLABORATIVE PRODUCTS -Multimedia Tables

Furniture for Work Spaces: E60PQ-140003-083/D

ARTEMIS (WOOD & LAMINATE)

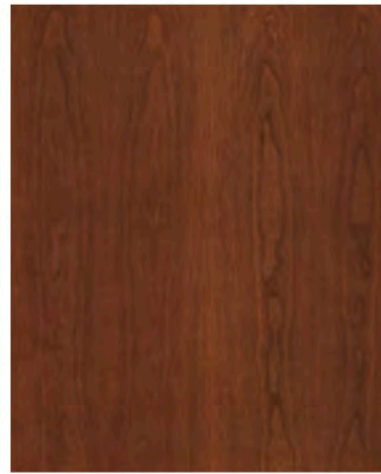




# Standard Finishes

## Cherry

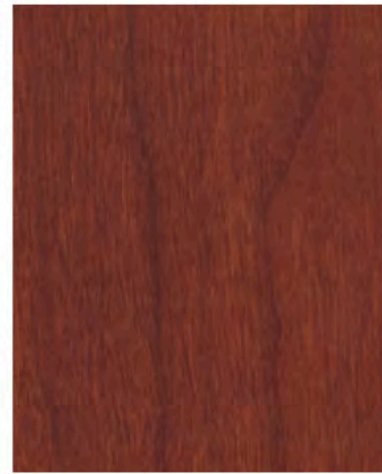
### Flat-Cut



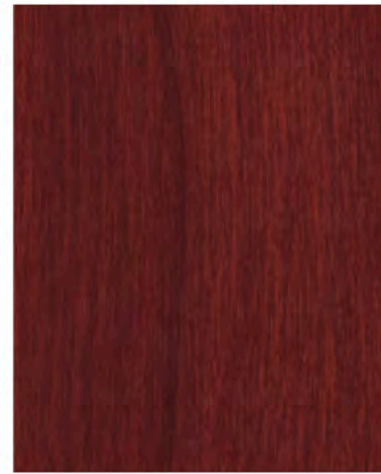
Light Cherry



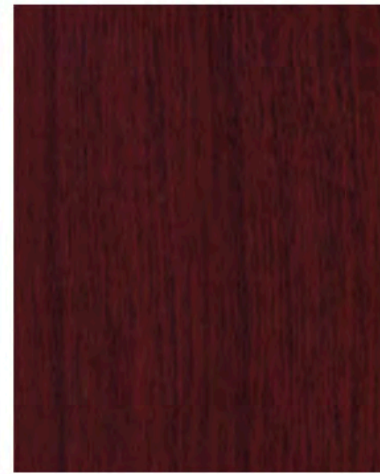
Natural Cherry



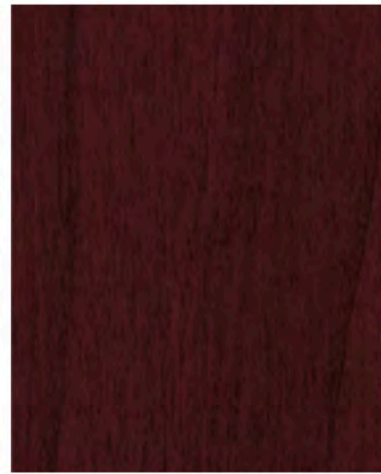
American Cherry



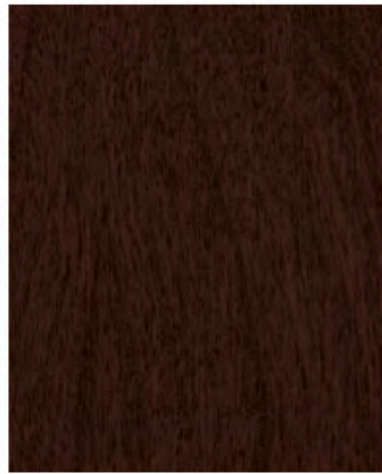
Medium Cherry



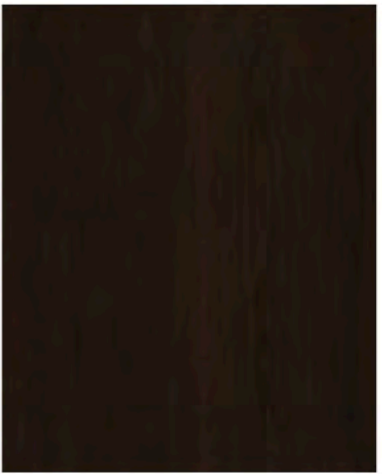
Appalachian Cherry



Imperial Cherry

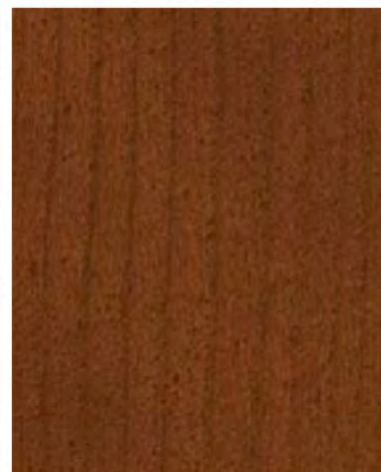


Standard Cherry

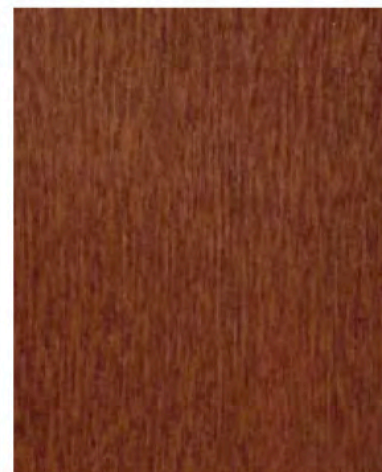


Sable Cherry

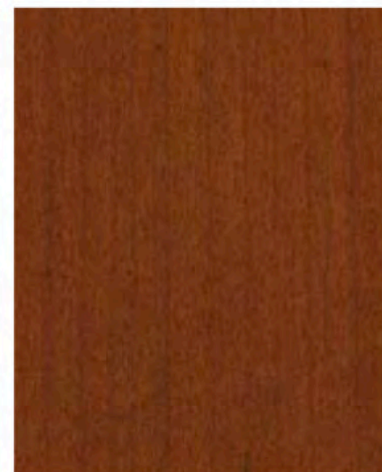
### Quarter-cut



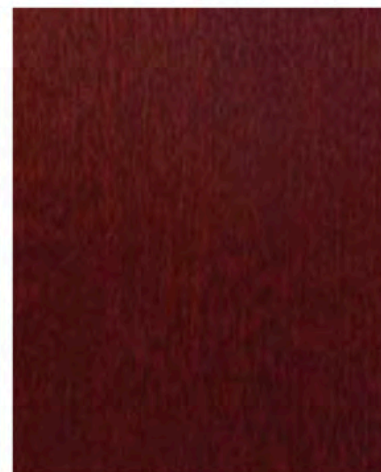
Light Cherry



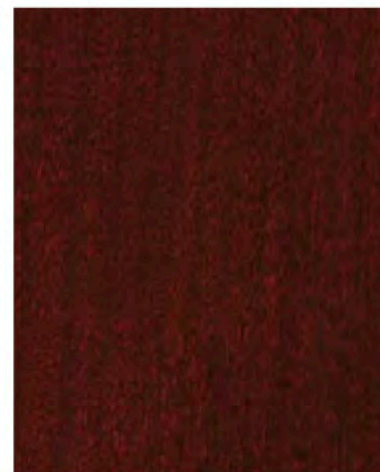
Natural Cherry



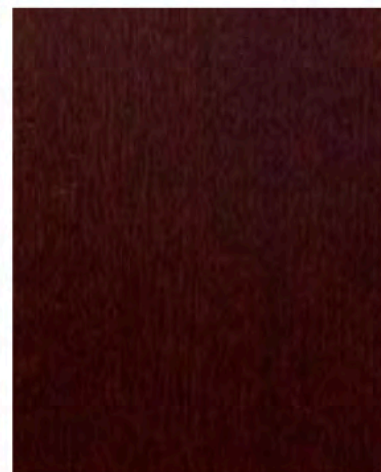
American Cherry



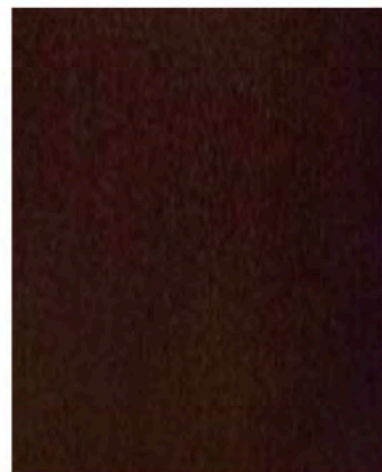
Medium Cherry



Appalachian Cherry



Imperial Cherry



Standard Cherry

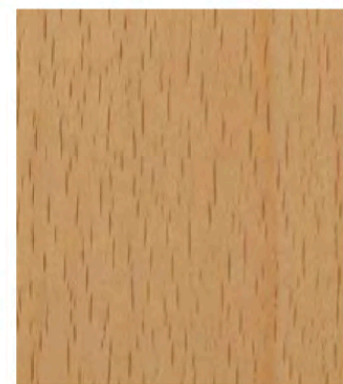


Sable Cherry

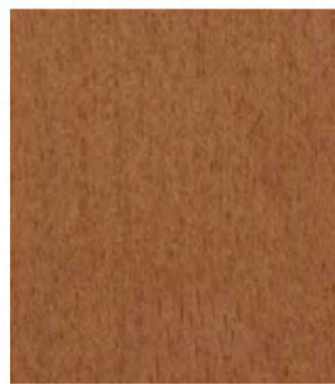


# Standard Finishes

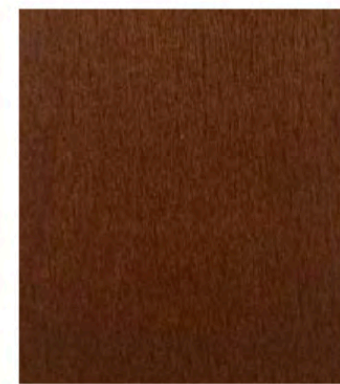
## Beech



Clear Beech



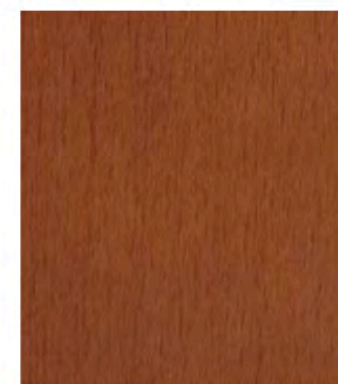
Medium Anigre



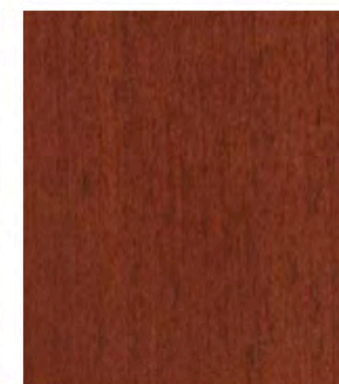
Natural Cherry



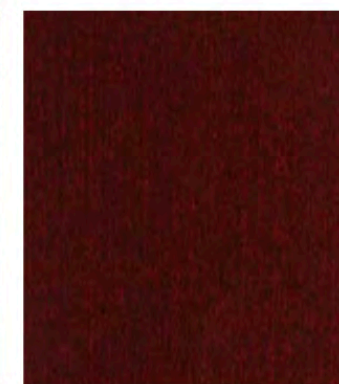
Light Cherry



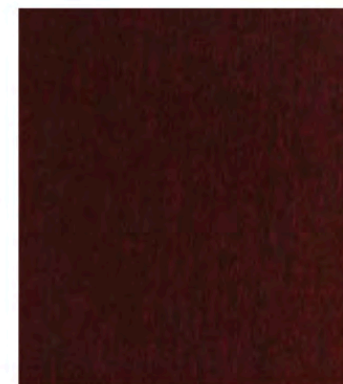
American Cherry



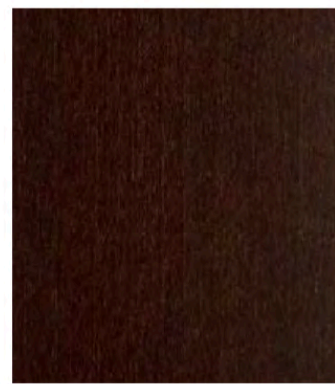
Medium Cherry



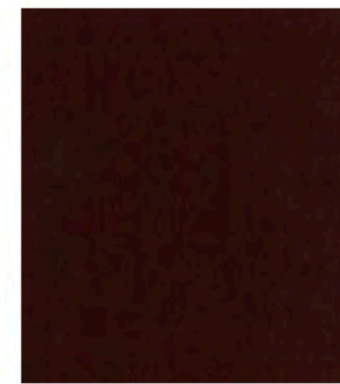
Appalachian Cherry



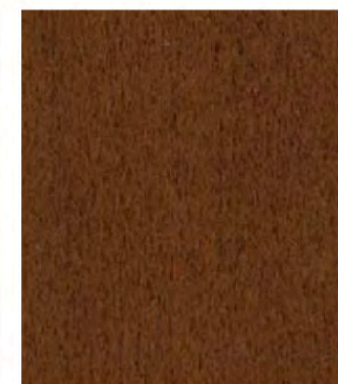
Imperial Cherry



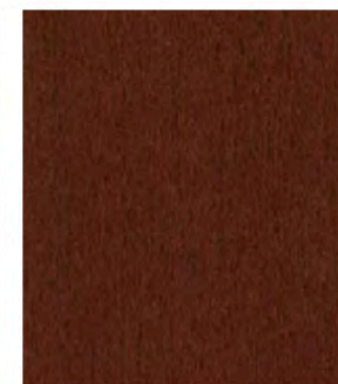
Sable Cherry



Standard Cherry



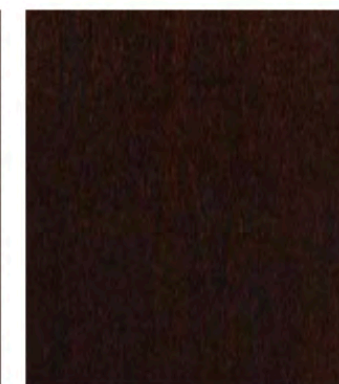
Natural Walnut



Regular Walnut



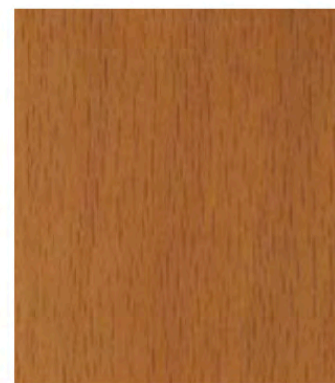
Cordovan Walnut



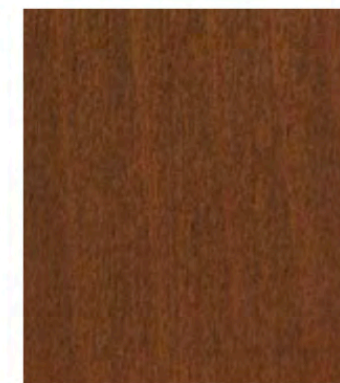
Dark Walnut



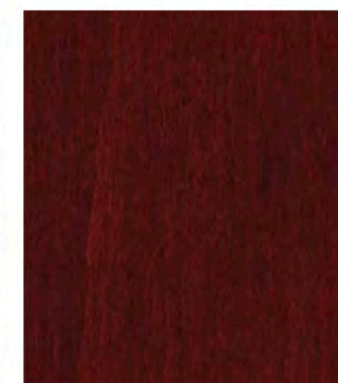
Light Oak



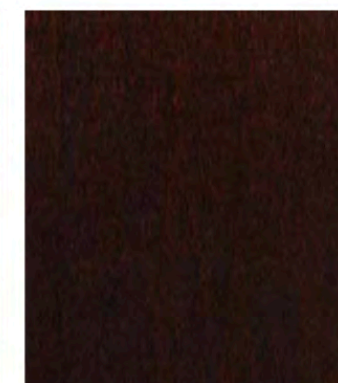
Harvest Oak



Mellow Oak



Mahogany



Espresso



SilverGrey On Oak

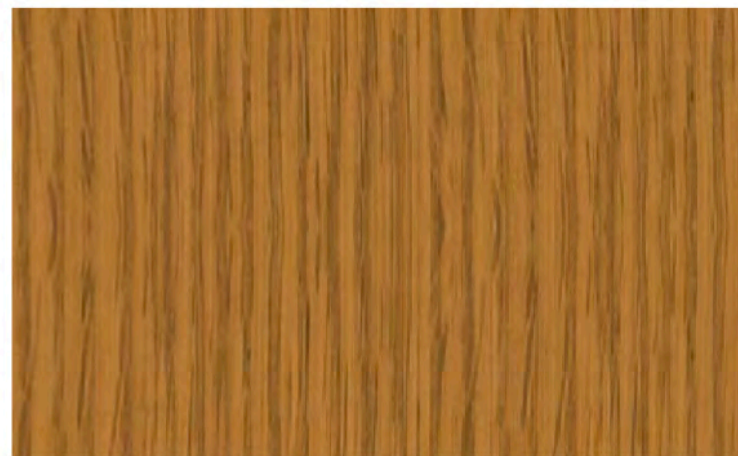


# Standard Finishes

## Rift Oak



Light Oak



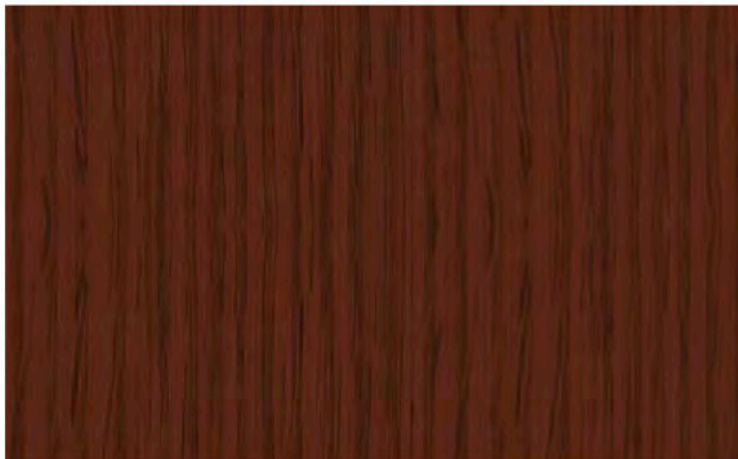
Harvest Oak



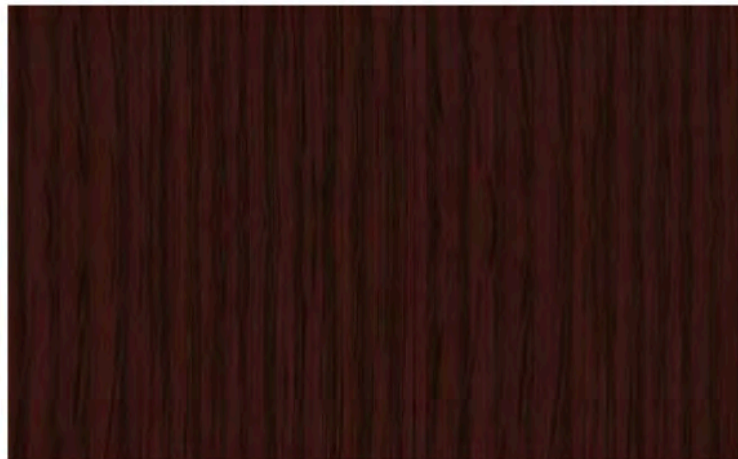
Mellow Oak



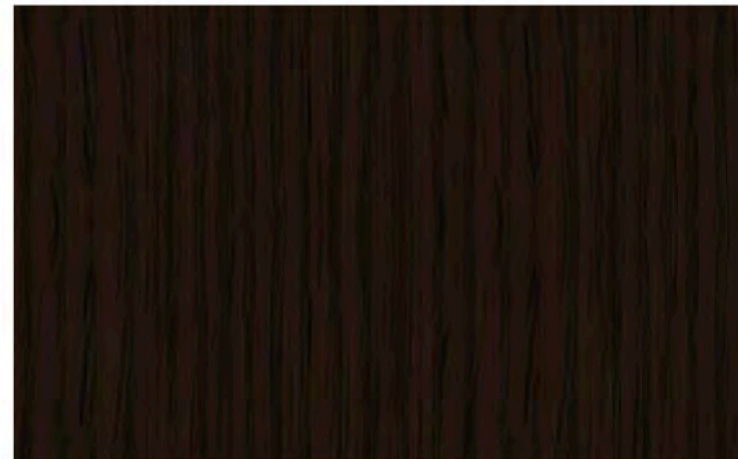
Walnut on Oak



Medium Cherry on Oak



Mahogany on Oak



Espresso on Oak



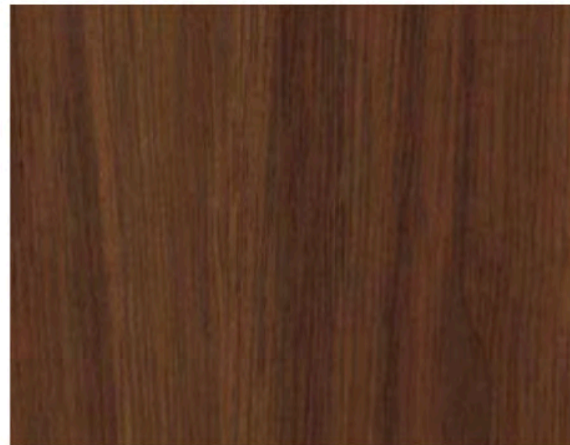
SilverGrey on Oak



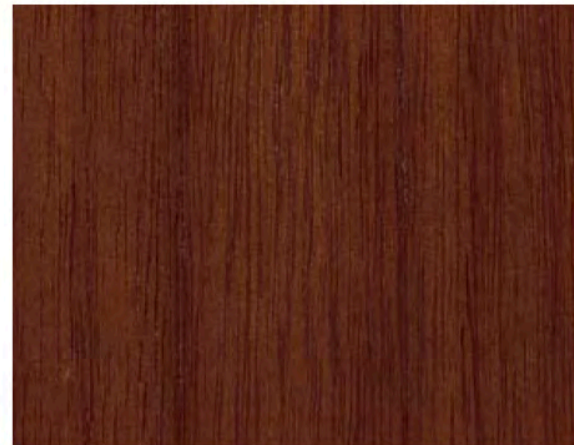
# Standard Finishes

## Walnut

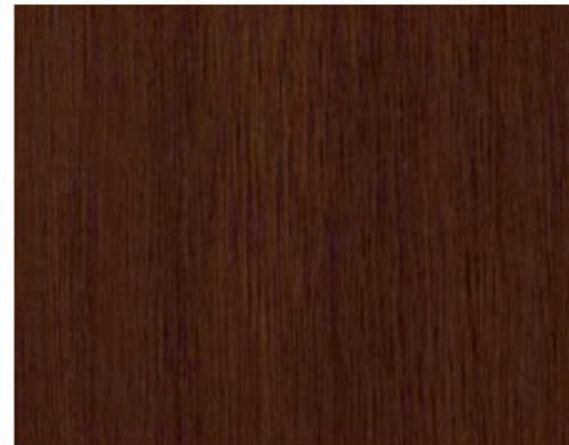
Flat-Cut



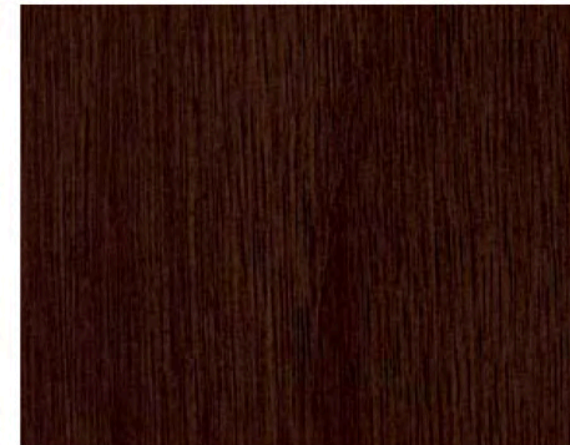
Natural Walnut



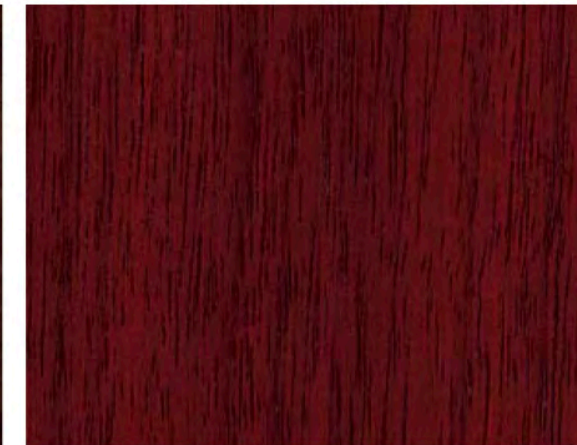
Regular Walnut



Cordovan Walnut

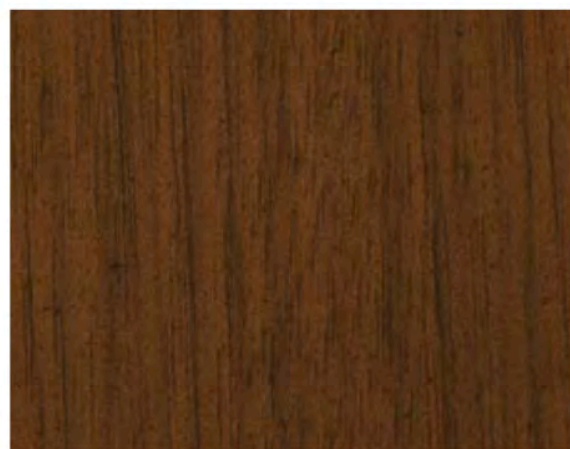


Dark Walnut

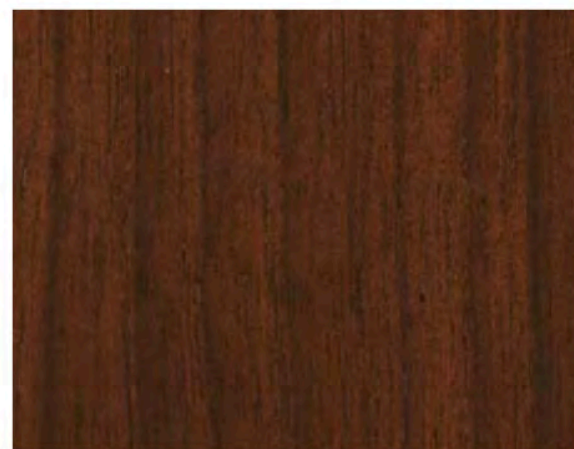


Mahogany on Walnut

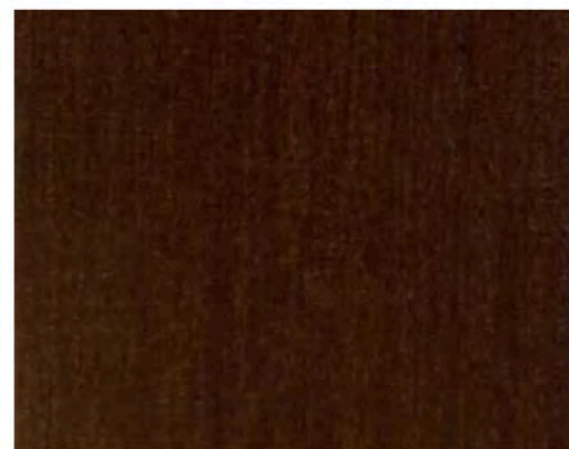
Quarter-cut



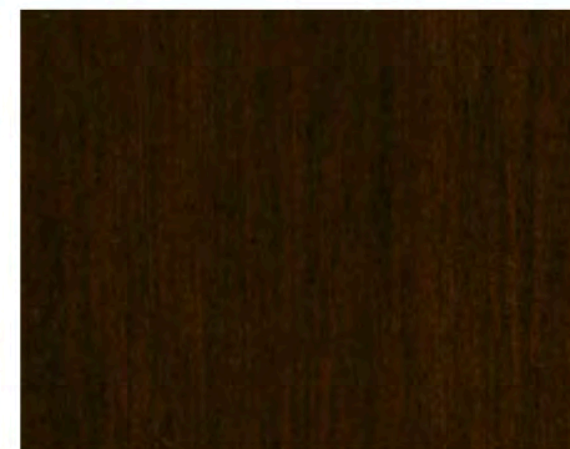
Natural Walnut



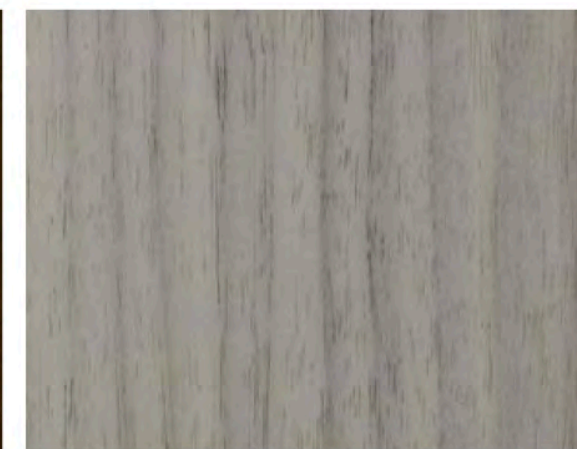
Regular Walnut



Cordovan Walnut



Dark Walnut



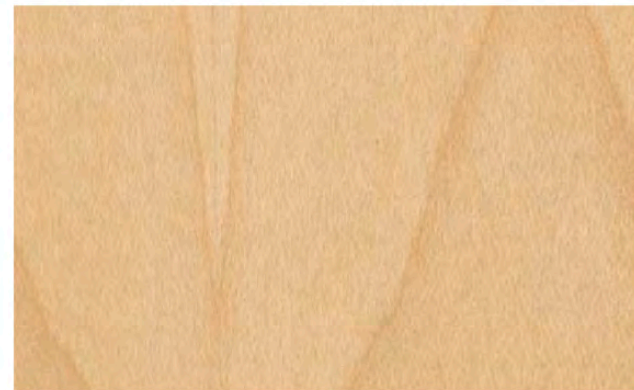
SilverGrey on Walnut



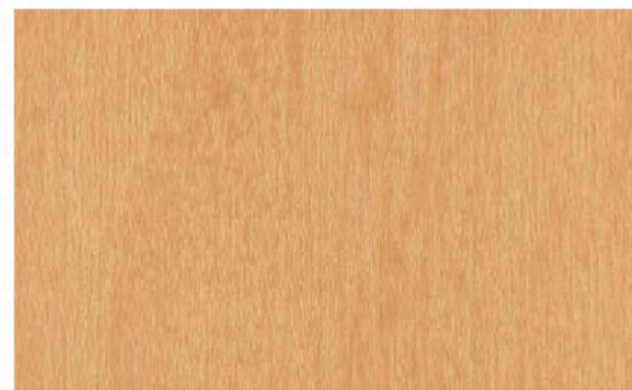
# Standard Finishes

## Maple

### Flat-Cut



Clear Maple

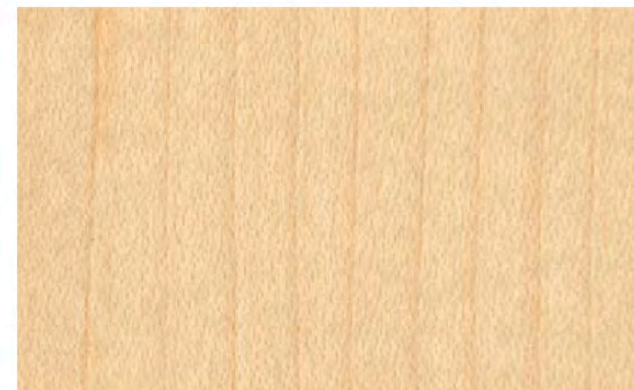


Wheat Maple

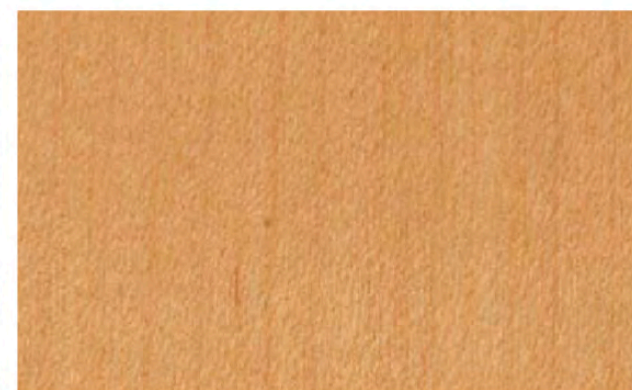


Honey Maple

### Quarter-cut



Clear Maple



Wheat Maple



# Standard Laminate Program



Champagne



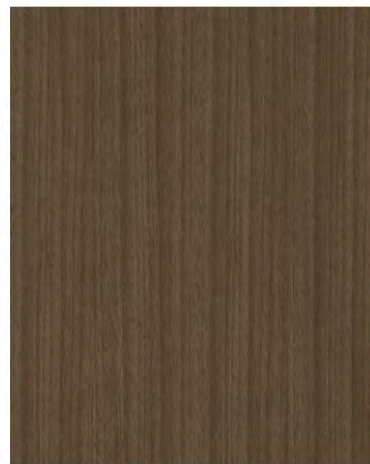
Hardrock Maple



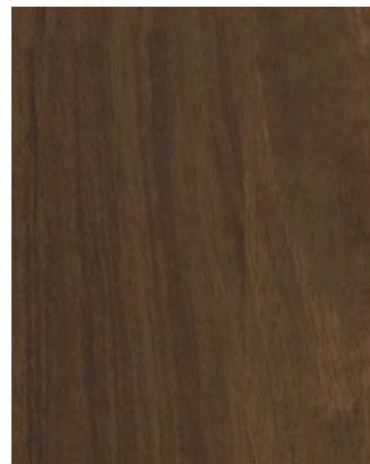
Dune



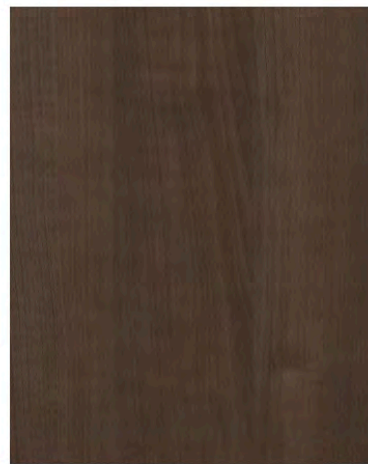
Gingerbread



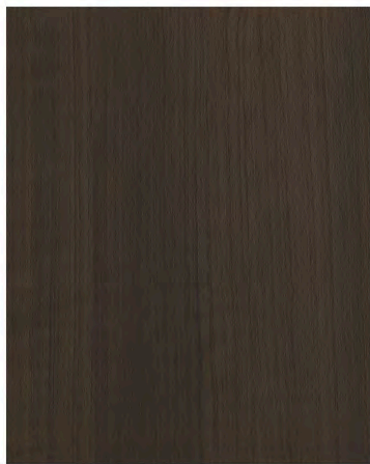
Portobello



Park Avenue Walnut



Chocolate



Nutmeg



Ash



Willow



Copper



Shiraz Cherry



Dark Walnut



Designer White



Platinum



Earth

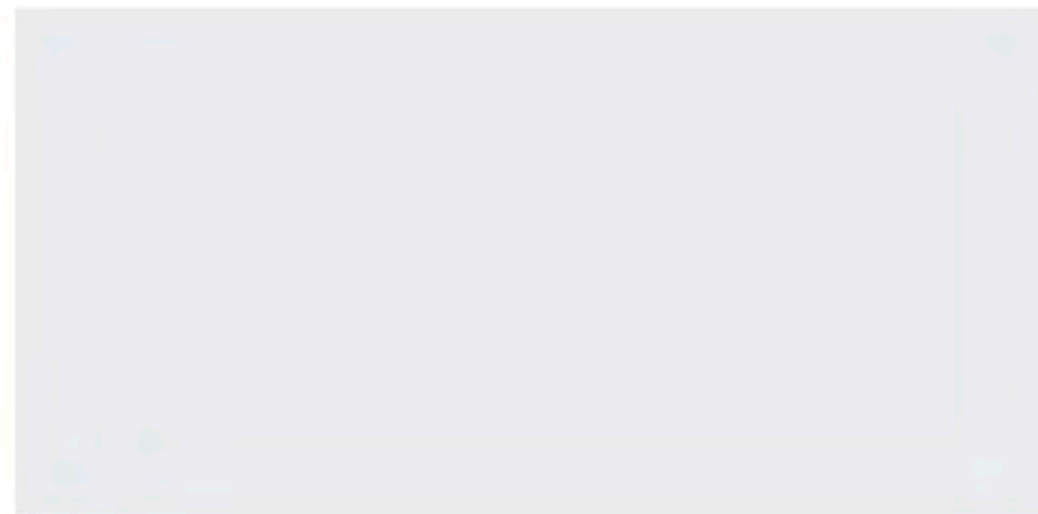
## Laminates

Charcoal

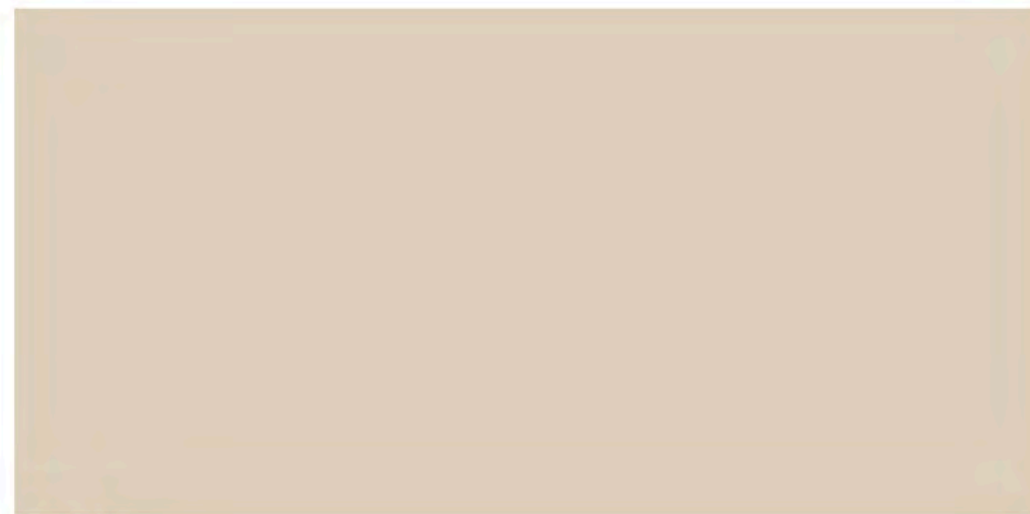


# Standard Finishes

## Palette



White



Sand



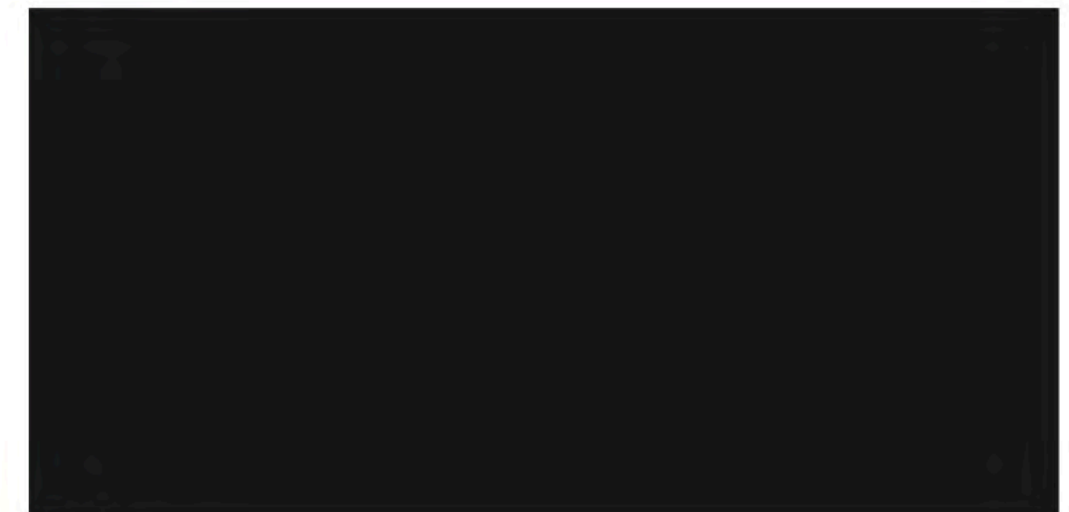
Soft Green



Steel Blue



Slate



Black



# Krug Textiles – Fabric Program

## Grade 1

### ARLO



308 MIDNIGHT



306 PETROL



84 NUTMEG



908 CHARCOAL



62 OATMEAL



93 SEAL



90 LIMESTONE



601 PEARL

### FRANKLIN



47 CAMEL



3009 MIDNIGHT



909 BLACK



67 FAWN



9004 CHARCOAL



97 CINDER



308 PETROL



94 METAL



108 ORCHID

### COMRADE



309 MIDNIGHT



84 TEAK



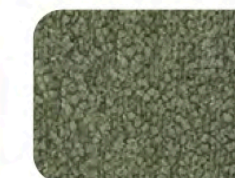
601 SNOW



63 LINEN



57 MARIGOLD



24 ALPINE



31 DUCK EGG



905 IRON

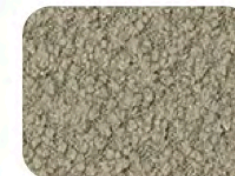
### FELICITY



601 IVORY



305 SKY



64 PUTTY



603 TAUPE



62 FAWN



93 COAL



36 BLUEBERRY



405 HENNA



# Krug Textiles – Fabric Program

## Grade 2

### GRADDY



25 CAPER



31 SKY



34 SLATE



604 FLAX



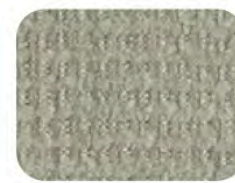
84 TEAK



901 CHAR



98 NICKLE



93 GRAY

### YATES



84 BIRCH



44 CLAY



803 TOAST



87 TAUPE



25 JUNIPER



305 INDIGO



109 CRANBERRY



92 ZINC



91 SILVER



908 CHARCOAL

### MCCOY



608 TUNDRA



601 CREME



32 ROBIN'S EGG



908 CHARCOAL



94 MERCURY



62 COPPER

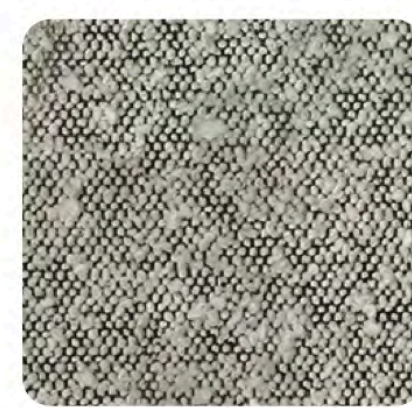


84 BARK



108 CORDOVAN

### ORIS



908 DOMINO



604 BARK



305 MIDNIGHT



601 CREAM



64 PUTTY



306 DELFT



205 CHARTREUSE



902 ZINC



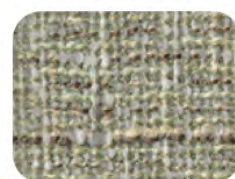
# Krug Textiles – Fabric Program

## Grade 3

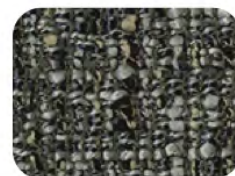
### MORITZ



205 SPEARMINT



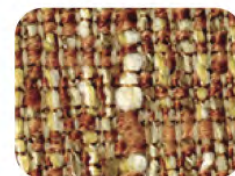
61 OYSTER



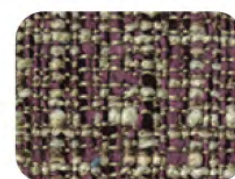
9008 CHARCOAL



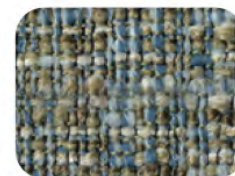
306 CADET



82 CLAY



104 MULBERRY



304 CAPRI



31 AEGEAN

### BISCOTTI



302 CAPRI



45 SPICE



61 DESERT



91 GRANITE

### LORENZO



306 INDIGO



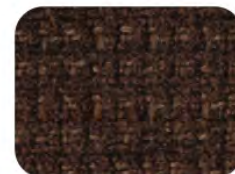
24 ALPINE



601 CREAM



64 LINEN



106 HENNA



91 FLANNEL



604 STUCCO



32 MIST

### INTRIGUE



601 OYSTER



27 OLIVE



805 PECAN



4003 OCHRE



608 STUCCO



908 CHARCOAL



605 STRAW



3009 MIDNIGHT



# Krug Textiles – Fabric Program

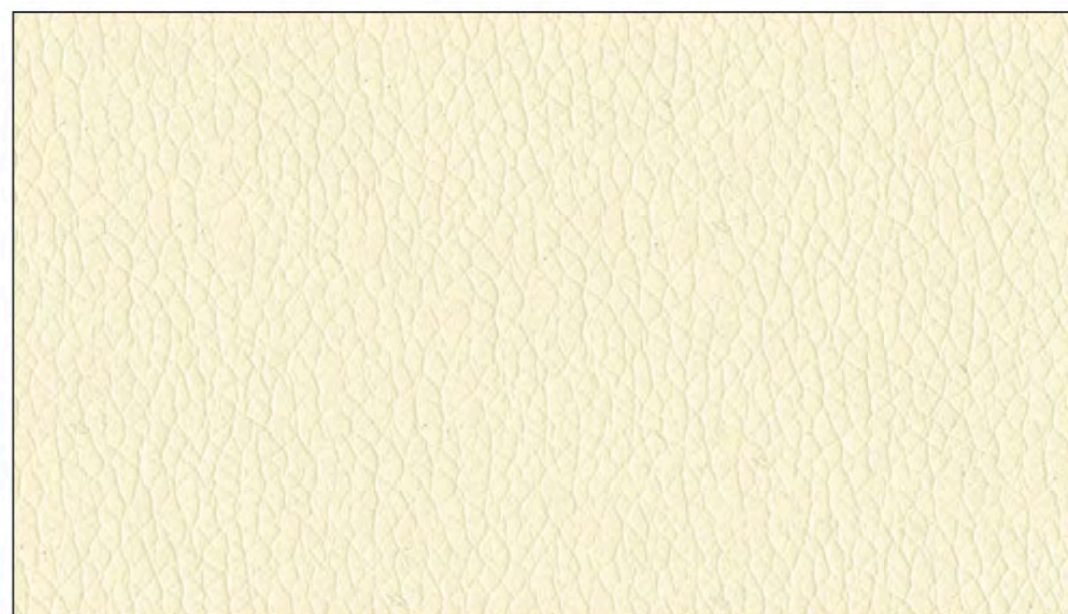
## LUXE



White  
FL3822



Cream  
FL6003



Vanilla  
FL0061



Parchment  
FL0605



Sandstone  
FL0608



Taupe  
FL3948



Mocha  
FL0808



Tan  
FL0802



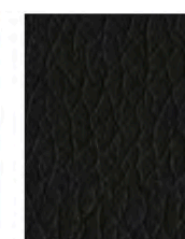
Chestnut  
FL0087



Bisque  
FL0805



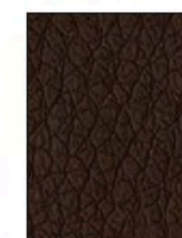
Chocolate  
FL8020



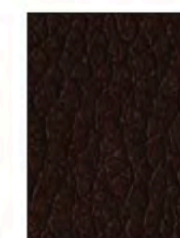
Black  
FL9009



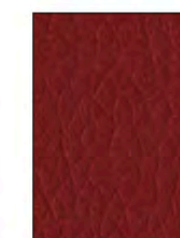
Earth  
FL0084



Brick  
FL0011



Wine  
FL0108



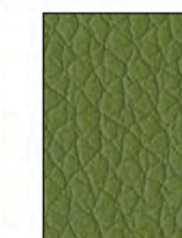
Garnet  
FL0017



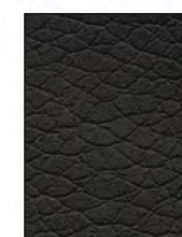
Rust  
FL0014



Citron  
FL0054



Sprig  
FL0205



Chinchilla  
FL6009



Steel  
FL0905



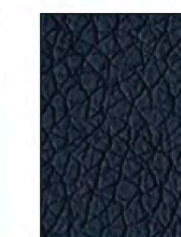
Grey  
FL9003



Lagoon  
FL0037



Pacific Blue  
FL3003



Navy  
FL3006



Plum  
FL1009



# Krug Textiles – Fabric Program

## IMPRESSION





# krug and the environment

---

Krug is committed to:

- Conducting business in a socially acceptable and responsible manner.
- Incorporating sustainability and environmentally responsible practices in all activities throughout Krug.
- Ensuring it's Management team supports and promotes all environmental objectives and procedures set forth in this policy.
- Using, recycling and reducing/eliminating waste materials wherever possible throughout the company.
- Allocating and sustaining adequate resources for the effective management of all necessary current and future environmental program requirements.
- Pollution prevention to land, air and water by ensuring legal compliance with all legislation and good business practices and pursuing end of life use for all products to reduce waste destined to landfill.
- Promote life-cycle thinking throughout all aspects of environmental matters.
- Developing supporting procedures and goals based on the needs and objectives. These procedures and goals will be communicated throughout Krug.



# Certifications

